

# BINMAXX ARM SCALE



## Profitability Tool

### BinMaxx Scale features

- Provides the weight of every commercial container on a FEL route every day
- Known weight of container compared to disposal cost for this same weight ensures profitability
- Dynamic “weigh-in-motion” system
- Arm mounted system maximizes durability
- Arm mounted system preserves calibration
- Sensors compensate for changes in temperature, altitude and/or humidity
- J1939 and serial interfaces for connection to onboard computers and other peripheral devices including an onboard printer
- Set up and calibration is PIN protected



BinMaxx is the tool for maximizing profitability on FEL commercial account routes, at a price that will now allow for the best return of investment in the business.

Maximize Profit - eliminate the practice of including non-profitable accounts on a FEL route. Ensure profitability for every commercial account on every route. BinMaxx, using the newest technology, mounts the sensors on the truck's arms, not on the forks. This isolates the components of the BinMaxx system from the pounding to which fork mounted systems are exposed. Therefore, while optimizing your profitability, BinMaxx will also stay in calibration longer and last longer than fork mounted systems.

# LOADMAXX AXLE SCALE



## Profitability Tool

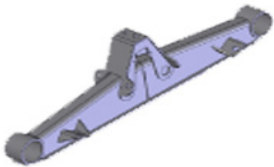
### Benefits

- Provides driver weight information to manage legal loading every time
- Systems provides group axle weights, net payload and GVW
- Eliminate fines and penalties for being overloading
- Allows for the most appropriate choice in disposal site based on the vehicle's payload
- Drivers can operate safely with legally loaded vehicles
- Eliminates the liability associated with an overloaded vehicle
- Reduces equipment maintenance associated with running overloaded
- Increases the longevity of the asset by not running overloaded

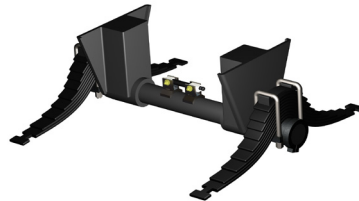


Provides the packer body axle and GVW weight needed to ensure the truck is at the optimum capacity before heading to the disposal site.

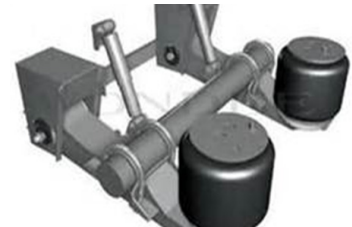
### APPLICABLE SUSPENSION TYPES INCLUDE:



**Hendrickson HaulMaxx**



**Mack Camelback**



**Air Ride**